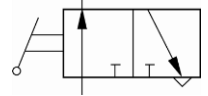
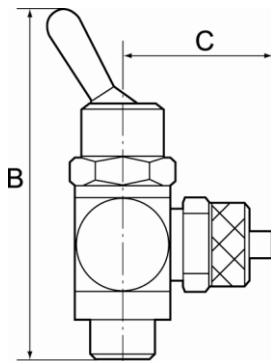


Manually operated toggle valves, 3/2-way types.  
 For all applications where compressed air must be switched on or off quickly and easily or a cylinder operated manually.  
 Designed as a banjo-type valve with a hollow bolt and ring piece.  
 Suitable for screwing directly into the equipment or for panel mounting.  
 Compact type of construction, also ideal where space is restricted.



Operating pressure:	Max. 8 bar
Temperature range:	-20 °C to +80 °C
Hollow bolt, pivoting arm, toggle:	Nickel-plated brass
Valve trim:	Brass with a bare metal surface
Seal:	NBR
Captive seals:	Polyamide (glass fibre-reinforced)
Panel thread:	M12x0.75 (max. plate thickness 4 mm)



3615.014-6

### 3/2-way toggle valves

pressure port on hose side, plug-in connector

Type No.	Art. No.	Version	Thread	For pipe mm	a/f mm	B mm	C mm
3615.018-4	107031	3/2-way	G 1/8	4	14	55.0	19.5
3615.018-6	107032	3/2-way	G 1/8	6	14	55.0	22.0
3615.018-8	107033	3/2-way	G 1/8	8	14	55.0	22.5
3615.014-6	107034	3/2-way	G 1/4	6	17	60.0	23.5
3615.014-8	107035	3/2-way	G 1/4	8	17	60.0	24.0
3615.014-10	107036	3/2-way	G 1/4	10	17	60.0	26.5